

Foam Filled Roller Shutter



The roller shutter that combines great aesthetics and takes care of your carbon footprint, manufactured and installed in accordance with BS EN 13241-1:2003 + A2:2016 & BS EN 12604:2017.

Roller curtain

The shutter curtain is constructed from 95 mm deep insulated laminated coated steel laths, injected with CFC free polyurethane foam. The outer lath surface incorporates 3 grooves for increased strength and visually pleasing external surface. The shutter curtain is available in a range of stock colours. Alternate laths are retained by nylon endlocks fixed and secured by steel rivets.

Bottom rail

Heavy duty extruded aluminum complete with air cushion rubber strip.

Headseal

100mm or 150mm nylon brushstrip is supplied to fix to the underside of the lintel to form a seal between the lintel and the shutter curtain.

Side guides and angles

Specially designed galvanised guide section 80 mm x 90 mm deep x 2.5 mm incorporating vertical brush seals full height to both sides of each guide. Galvanised steel angles of suitable size and thickness are supplied to support the side guides and to form a secure fixing to the structure.

Roller barrel

Constructed from mild steel tube of suitable outside diameter and wall thickness to suit shutter application. Barrels are fitted in conjunction with an appropriate safety device, i.e. Safedrive motor unit.

Endplates

Of suitable design, and ranging from 6 mm to 10 mm thickness. Fitted with suitable cleats for fixing to the structure.

Operation

A variety of electric motors are used dependent upon application. 415 volt 3 phase motors are normally used. A push button station is provided with "UP", "DOWN" and "STOP" buttons. Our estimate/quotation should provide the relevant details concerning the electric specification intended to be used for each particular installation, together with the electrical requirements that need to be provided by the customer.

Finish

The insulated curtain is finished in a high quality PVC laminate with anti-scratch properties to both sides and is available in a range of standard colours. Guides, angles and endplates have a galvanised finish or can be powder coated.

Coil casings (hoods) / fascias / motor covers

Coil casings, fascias and motor covers can be supplied at additional cost and are supplied galvanised unless specified otherwise.

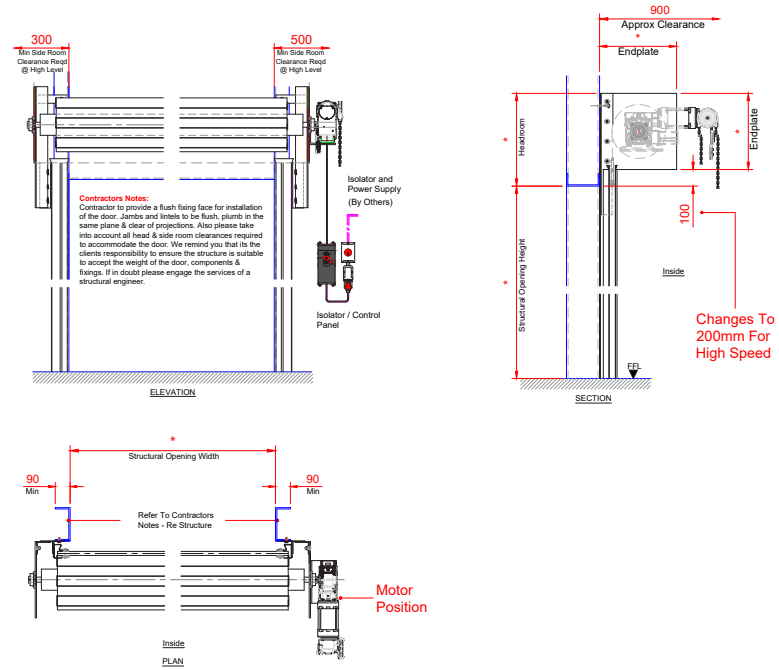
Windows

Rows of double glazed Perspex windows can be incorporated into the shutter laths at additional cost.

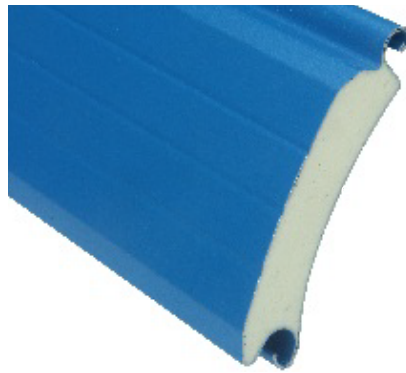
Technical data

Standard size up to (W x H) ¹⁾	7000 x 6500 mm
Lath profile	95 mm foam filled
Power Options	- 240V tubular motor - 240V single / 415V three phase direct drive
Weight	40 kg/m ²
Finish	- PVC laminate curtain - Galvanised / PPC guides, angles and end plates
Thermal performance	3.3 W/m ² K (full assembled curtain)
Acoustic rating	22 dB
Air Permeability	195 m ³ /hr/m ² @50Pa
Wind load, EN 12424	Up to Class 5
<small>1) other sizes available on request</small>	

General arrangement drawing



Lath options



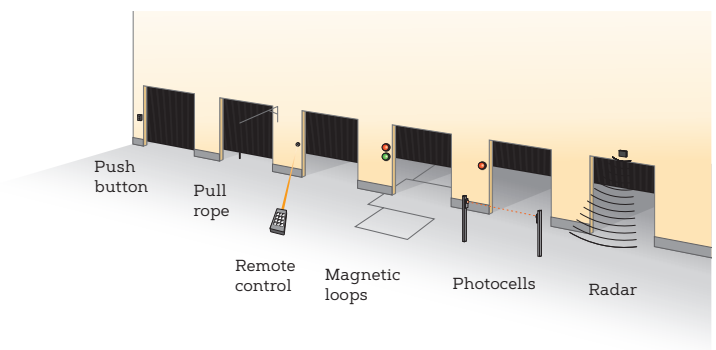
White RAL 9003	Goosewing Grey RAL 7038	Galvanised
Silver RAL 9006	Dark Grey RAL 7011*	Merlin Grey BS18 B25
Anthracite RAL 7016	Black RAL 9005	Red
Moorland Green BS12 B21	Olive Green RAL 6003	Dark Green RAL 6009*
Juniper Green BS12 B29	Chili Red RAL 3000	Golden oak
Van Dyke Brown RAL 8014	Solent Blue BS18 E53	Sargasso RAL 5003*

* Nearest colour

Automation options



Standard Control Panel



INDUSTRIAL DOOR ENGINEERING LTD

HEAD OFFICE

Winnington Avenue, Winnington, Northwich, Cheshire CW8 4EQ

TEL: 01606 871832 FAX: 01606 871482

Email: sales@industrial-door-eng.co.uk Web: www.industrial-door-eng.co.uk

Also At

Unit 2 Parkway Industrial Estate, Wakefield Road, Ossett WF5 9JA

TEL: 01924 387070 FAX: 01924 267303



Certificate Number 16786
ISO 9001
ISO 14001



Raising Standards
Safety Assured

