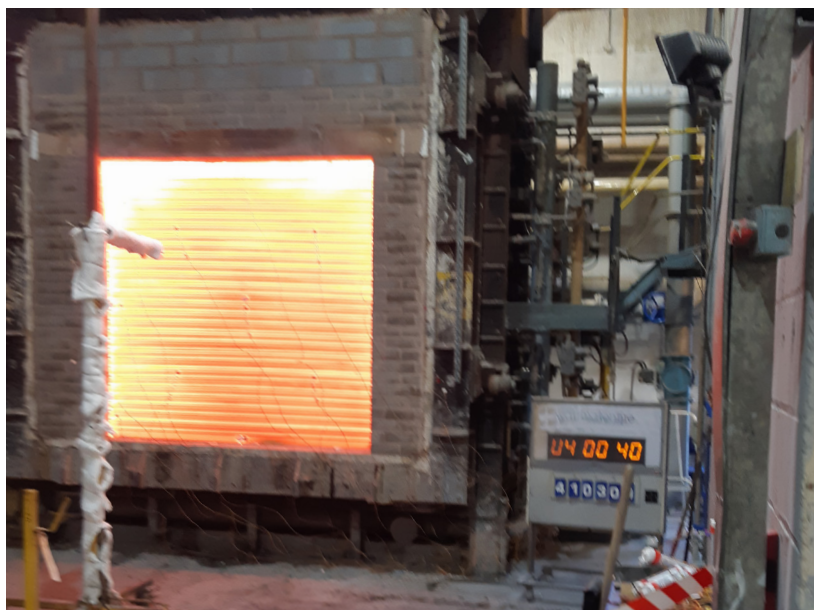


Geared Drive Fire Shutter



Our safe and reliable fire shutters are fully tested and certified in accordance with the latest fire standards BS EN 1634 -1:2014 + A1:2018 & BS EN 16034:2014.

Roller curtain

The shutter curtain is constructed from cold rolled galvanised steel laths with a minimum thickness of 22 swg. Each lath is retained by malleable cast iron endlocks fixed and secured by steel rivets.

Bottom rail

A 16 mm galvanised steel T-section profile.

Side guides and angles

The guides are purpose rolled galvanised sections 65 mm deep fixed to galvanised angles for fixing to the structure.

Roller barrel

Constructed from mild steel tube of suitable outside diameter and wall thickness to suit shutter application. The barrel is coated in a bespoke manufactured modified vinyl silver grey IP190 finish.

Endplates

Of suitable design ranging from 3 mm - 7 mm thickness.

Coil casings

Coil casings are supplied as standard and are manufactured from 20 swg galvanised sheet steel.

Finish

Side guides, supporting angles and door curtain are galvanised. Powder coated finish is a popular option provided at extra cost.

Motor specification

Power operation of the door is provided by a 1ph or 3ph motor unit complete with a push button station with "UP", "DOWN" and "STOP" buttons. The gearbox contains a controlled descent mechanism and a brake release cord to close the shutter in the event of a power failure. A solenoid release mechanism is available which provides a manual test and automatic reset facility, and can be connected to a fire alarm system - by others (Solenoid release mechanism requires a 24-volt signal at 1 amp and up to 3 amp start up current upon activation of the fire alarm system).

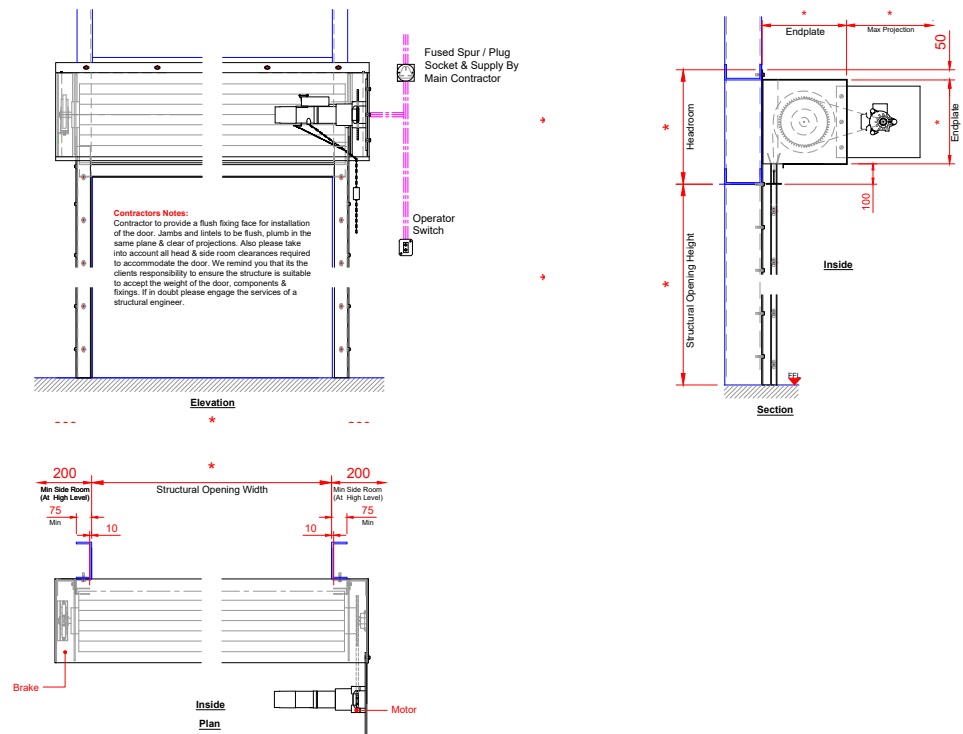
Power requirements

A 240V, single phase or 415V, three phase pre-wired motor with integral limit switches, low level emergency hauling mechanism, low level control panel with panel mounted "UP", "DOWN" and "STOP" buttons and a 3 pin or 5 pin prewired plug. Client must provide a surface mounted 13amp 3 pin (single phase) or 10amp 5 pin (three phase) mains wired female socket within 1 metre of the motor.

Technical data

Fire rating	1, 2 or 4 hour
Lath profile	76 mm concave
Power Options	240V single / 415V three phase geared drive
Weight	45 kg/m ²
Finish	- Galvanised - PPC to RAL / BS colour
Wind load, EN 12424	Up to Class 3

General arrangement drawing



Audio visual warning panel



A popular extra for fire shutters is an audio-visual panel which provides a warning that the fire shutter is about to close automatically via the fire alarm system.

The panel requires a 240 volt supply together with an appropriate signal from the fire alarm system. The panel also includes a battery backup system and an adjustable timer close facility.

Please Note: The IDE Entrance Systems fire shutter can be fitted to masonry or steelwork openings.



INDUSTRIAL DOOR ENGINEERING LTD

HEAD OFFICE

Winnington Avenue, Winnington, Northwich, Cheshire CW8 4EQ

TEL: 01606 871832 FAX: 01606 871482

Email: sales@industrial-door-eng.co.uk Web: www.industrial-door-eng.co.uk

Also At

Unit 2 Parkway Industrial Estate, Wakefield Road, Ossett WF5 9JA

TEL: 01924 387070 FAX: 01924 267303



Certificate Number 16786
ISO 9001
ISO 14001



Raising Standards
Safety Assured

