

# Tube Motor Fire Shutter



**The more compact and space-conscious fire shutter solution, fully tested and certified in accordance with the latest fire standards BS EN 1634 -1:2014 + A1:2018 & BS EN 16034:2014.**

#### **Roller curtain**

The shutter curtain is constructed from cold rolled galvanised steel laths, 76 mm x 22 swg. Each lath is retained by cast iron end locks fixed with galvanised steel rivets.

#### **Bottom rail**

A 1.6 mm galvanised steel T-section profile.

#### **Side guides and angles**

The guides are purpose rolled galvanised sections 65 mm deep fixed to galvanised angles for fixing to the structure.

#### **Roller barrel**

A mild steel 101 mm outside diameter tube encases the 240 volt motor. The main body of the motor is fixed to the door endplate and the outer body rotates the barrel, opening and closing the door. The barrel is coated in a bespoke manufactured modified vinyl silver grey IP190 finish.

#### **Endplates**

3 mm thick galvanised steel, either 300 mm square or 350 mm square.

#### **Coil casings**

Coil casings are supplied as standard and are manufactured from 20 swg galvanised sheet steel.

#### **Finish**

Side guides, supporting angles and door curtain are galvanised. Powder coated finish is a popular optional extra provided at additional cost.

#### **Electric specification**

Power operation of the door is provided by a 240V 1ph tubular motor which is discreetly fitted within the door roller-barrel. The system also comprises a control panel combining an un-interruptible power supply and the operation interface for normal and fire operation.

#### **Normal operation**

The door can be opened and closed for security purposes using a key switch or rocker switch.

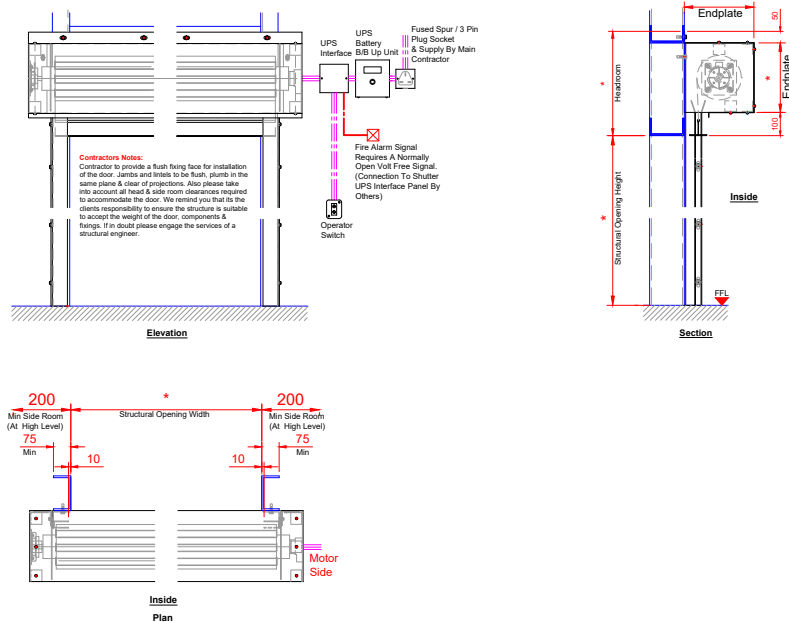
#### **Fire operation**

The control panel is designed to accept a 24 volt DC or volt free fire signal. On receipt of the fire signal the control panel will send a signal to close the door under power. In 'sleep' mode the UPS will be turned off and only become 'live' when a command is given to the FDI-UPS controller. This will ensure that the UPS can provide the maximum standby time by using power only when required. This will allow a fully charged UPS to provide a supply for several days after a power failure. When the mains supply is healthy the UPS will become 'live' almost immediately and power the motor. If a power failure occurs, there will be a delay of approx. 3 seconds for the UPS to fully 'wake up' before the motor will run. This 3 second delay also acts as a warning that there may be a problem with the mains supply to the UPS.

#### **Technical data**

Fire rating	1, 2 or 4 hour
Lath profile	76 mm concave
Power Options	240V tubular motor
Weight	45 kg/m <sup>2</sup>
Finish	- Galvanised - PPC to RAL / BS colour
Wind load, EN 12424	Up to Class 3

## General arrangement drawing



## Audio visual warning panel



A popular extra for fire shutters is an audio-visual panel which provides a warning that the fire shutter is about to close automatically via the fire alarm system. The panel requires a 240 volt supply together with an appropriate signal from the fire alarm system. The panel also includes a battery backup system and an adjustable timer close facility.

## Electrical options



### Optional sentry control panel

Our unique sentry control panel constantly monitors the strength of the fire alarm signal and warns if the signal is weak. The unit comes complete with a battery backup facility which charges on a trickle feed from the mains supply to ensure sufficient charge for use in the event of power failure. The Sentry control panel also monitors the charge level of the battery and warns if it is low. Should the battery level be critically low then the panel will signal the fire shutter to close.

**Please Note: The IDE tube motor fire shutter can be fitted to masonry or steelwork openings.**



## INDUSTRIAL DOOR ENGINEERING LTD

### HEAD OFFICE

Winnington Avenue, Winnington, Northwich, Cheshire CW8 4EQ

TEL: 01606 871832 FAX: 01606 871482

Email: sales@industrial-door-eng.co.uk Web: www.industrial-door-eng.co.uk

### Also At

Unit 2 Parkway Industrial Estate, Wakefield Road, Ossett WF5 9JA

TEL: 01924 387070 FAX: 01924 267303



Raising Standards  
 Safety Assured

